

EMERGENCY CONTACTS  
FOR YOU AND YOUR FAMILY  
PA Mental health support and referral line  
1-855-284-2494

WASHINGTON, PA BEHAVIORAL HEALTH CRISIS LINE  
1-877-225-3567

WASHINGTON COUNTY BHDS LINE  
724-228-6832

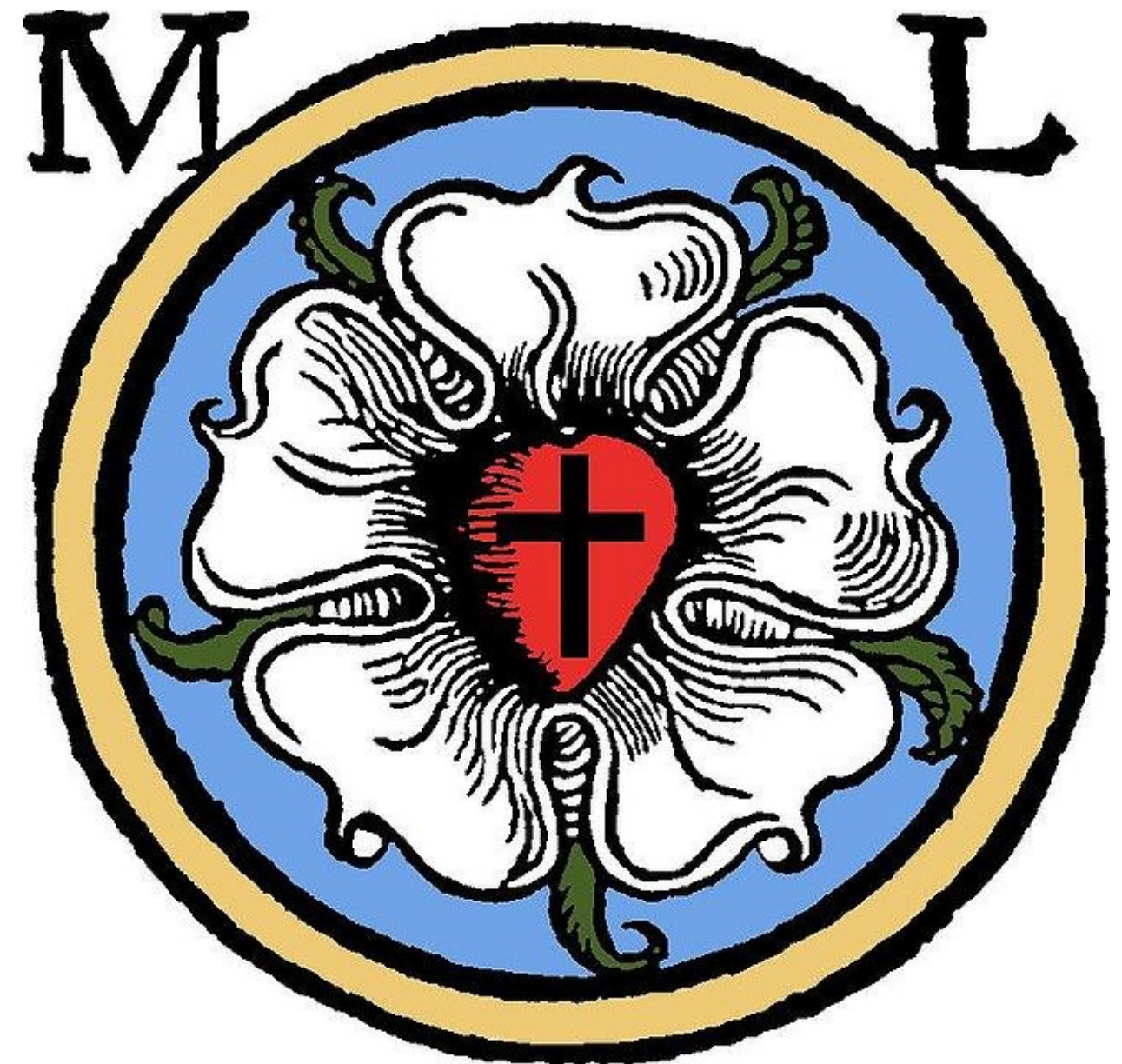
SCOTT BERRY DIRECT LINE  
724-250-4079 (FOR CHURCH MEMBERS ONLY)

FOR OTHER NEEDS, CONTACT 211 OR THE CHURCH.

---

# REFORMATION SUNDAY

1517—2023



FIRST LUTHERAN CHURCH



**The Flower Chart for 2023** is posted in the narthex. If you wish to place flowers, (real or artificial) near the altar, sign your name opposite the date of your choice. You will be reminded of your date and asked for the wording you want in the bulletin two weeks before the due date.

**Sign-up sheets are posted to host a coffee hour in 2023.** Please write your names under the month you would like to host. The coffee hours have been a wonderful time of fellowship and the hosts have been awesome! Thank you!!

**Sign-up sheets are posted for Lay Readers in 2023.** Please sign up.

**Please remember to continue contributing donations to our girls in Ethiopia.**  
**Please consider this as a call to help others in need.**

---

**Please pray for those in need of healing:**

Janet Burke, Shari Kienzle, Susan Westcott, baby Isaac Christian, the Pollana family, Sylvia Sunstrum, Fritz Group, Eric Group, Danielle Sherman, Amy Verderber, Tillie and Larry, Lou Mayne, Judy, Debbie, Sayward, Jim H., Barbara Mounts, Chiquita Pearson, Tim and Sharon, Judy Coble, Gary Conti, Linnese, Karen and John, Neil Bassi, Phyllis Daniels, Simon Thorp, Josh, Kimberly Grewe, Anneliese Christian, Becky Wood, Apollos Yocca, Alex Houck, Bridgette, Rhonda Hendrickson, Ron Erdmann, Belinda, Wilda Durbin, Stacy Carroll, Emerson Dietrich, Ernest Oliver, Leann Vitteck, Young family, Isabella & family, and James.

\*The Prayer of the Day

P: Let us pray,

**C: O Lord God, heavenly Father, pour out Your Holy Spirit upon Your faithful people. Keep them steadfast in Your grace and truth, protect and comfort them in all temptation, defend them against all enemies of Your Word, and bestow upon the Church Your saving peace; through Your Son, Jesus Christ, our Lord, who lives and reigns with You and the Holy Spirit, one God, now and forever. Amen.**

First Reading

Revelation 14:6-7

L: The Word of the Lord.

**C: Thanks be to God.**

Anthem

Bell Choir

The Psalmody for the Day *(read responsively)*

Psalm 46

<sup>1</sup>God is our refuge and strength, a very present help in trouble.

**<sup>2</sup>Therefore we will not fear, though the earth be moved, and though the mountains be toppled into the depths of the sea;**

<sup>3</sup>Though its waters rage and foam, and though the mountains tremble at its tumult.

**<sup>4</sup>The Lord of hosts is with us; the God of Jacob is our stronghold.**

<sup>5</sup>There is a river whose streams make glad the city of God,  
the holy habitation of the Most High.

**<sup>6</sup>God is in the midst of her; she shall not be overthrown;  
God shall help her at the break of day.**

<sup>7</sup>The nations make much ado, and the kingdoms are shaken;  
God has spoken, and the earth shall melt away.

**<sup>8</sup>The Lord of hosts is with us; the God of Jacob is our stronghold.**

<sup>9</sup>Come now and look upon the works of the Lord,  
what awesome things He has done on earth.

**<sup>10</sup>It is He who makes war to cease in all the world;**

**He breaks the bow, and shatters the spear, and burns the shields with fire.**

<sup>11</sup>“Be still, then, and know that I am God; I will be exalted among the nations; I will be exalted in the earth.”

**<sup>12</sup>The Lord of hosts is with us; the God of Jacob is our stronghold.**

Second Reading: Romans 3:19-28

L: The Word of the Lord.

C: **Thanks be to God.**

\*The Gospel Acclamation (sung) (ELW) page 142

**Alleluia, Lord, to whom shall we go? You have the words of eternal life.**

**Alleluia. Alleluia.**

\*Gospel: John 8:31-36

C: **Glory to You, O Lord.** (sung after announcement of the Gospel)

C: **Praise to You, O Christ.** (sung after conclusion of the Gospel)

Sermon Rev. Robert B. Grewe

\*The Hymn of the Day *Lord Keep Us Steadfast in Your Word* (ELW) No. 517

\*The Nicene Creed

**I believe in one God the Father Almighty, Maker of Heaven and earth, of all that is, seen and unseen.**

**I believe in one Lord, Jesus Christ, the only Son of God, eternally begotten of the Father, God from God, Light from Light, true God from true God, begotten, not made, of one Being with the Father. Through Him all things were made. For us and for our salvation He came down from heaven; by the power of the Holy Spirit He became incarnate from the virgin Mary, and was made man. For our sake He was crucified under Pontius Pilate; He suffered death and was buried. On the third day He rose again in accordance with the Scriptures; He ascended into heaven and is seated at the right hand of the Father. He will come again in glory to judge the living and the dead, and His kingdom will have no end.**

**I believe in the Holy Spirit, the Lord, the giver of life, who proceeds from the Father and the Son. With the Father and the Son He is worshiped and glorified. He has spoken through the prophets.**

**I believe in one holy catholic and apostolic Church. I acknowledge one Baptism for the forgiveness of sins. I look for the resurrection of the dead, and the life of the world to come. Amen**

## First Lutheran Church

92 W. Walnut St., Washington, PA

724-225-4040

e-mail: church@flcwash.comcastbiz.net

website: www.flcwash.church

The Rev. Robert B. Grewe

724-705-4050

revrobertgrewe@flcwash.comcastbiz.net

Dennis Schmidt, Lutheran Lay Worship Leader

J. Judson Lacko, Lutheran Lay Worship Leader

Organist: Matthew Cimino

---

**The Flowers on the Chancel** are given to the glory of God in honor of Diane Fisher and Karen Coleman's birthdays and in loving memory of my husband James Coleman. A donation will be given to the church by Linda Coleman.

**The Lay Reader** is Christina Serbak.

**Acolytes** are Wesley Black and Parker Lambert.

**Counters and Greeters** today are H. Quedenfeld and S. Berry.

**Welcome to our Visitors!** The people of this congregation welcome you as you join us in worship this morning. Please sign the register, located in the narthex. If you have questions, please see the pastor or contact the church office.

**Do you wish to become a member of First Lutheran Church?** Please contact Pastor Grewe.

**Nursery:** We welcome all children to be a part of worship, but we realize that sometimes the service can be too long for the little ones. We have a nursery for those attending to the needs for infants and small children. There is a speaker in the nursery so that parents can still hear the service. You are welcome to use the nursery for the entire service, or just a small part.

## A Mighty Fortress Is Our God

1 A might - y for - tress is our God, a sword and shield vic -  
 2 No strength of ours can match his might! We would be lost, re -  
 3 Though hordes of dev - ils fill the land all threat -'ning to de -  
 4 God's Word for - ev - er shall a - bide, no thanks to foes, who

to - rious; he breaks the cruel op - pres - sor's rod and  
 ject - ed. But now a cham - pion comes to fight, whom  
 your us, we trem - ble not, un - moved we stand; they  
 fear it; for God him - self fights by our side with

wins sal - va - tion glo - rious. The old sa - tan - ic foe  
 God him - self e - lect - ed. You ask who this may be?  
 can - not o - ver - pow'r us. Let this world's ty - rant rage;  
 weap - ons of the Spir - it. Were they to take our house,

has sworn to work us woe! With craft and dread - ful might  
 The Lord of hosts is he! Christ Je - sus, might - y Lord,  
 in bat - tle we'll en - gage! His might is doomed to fail;  
 goods, hon - or, child, or spouse, though life be wrenched a - way,

he arms him - self to fight. On earth he has no e - qual.  
 God's on - ly Son, a - dored. He holds the field vic - to - rious.  
 God's judg - ment must pre - vail! One lit - tle word sub - dues him.  
 they can - not win the day. The king - dom's ours for - ev - er!

\*The Prayers of the Church (response)

P: Lord, in Your mercy,

**C: Hear our prayer.**

\*Sharing of the Peace

The Musical Offering

\*The Offertory

*Create in Me a Clean Heart*

(SBH) No. 27

\*The Great Thanksgiving

(ELW) page 144

\* The Lord's Prayer

**C: Our Father, Who art in heaven, hallowed be Thy name, Thy kingdom come, Thy will be done, on earth as it is in heaven. Give us this day our daily bread; and forgive us our trespasses, as we forgive those who trespass against us; and lead us not into temptation, but deliver us from evil. For Thine is the kingdom, and the power, and the glory, forever and ever. Amen.**

Lamb of God

(ELW) page 146

The Distribution

Communion Hymn

*Joyful Joyful We Adore Thee*

(ELW) No. 836

Prayer/Blessing

Announcements

\*The Benediction (*sung response*)**C: Amen, Amen, Amen.**

\*The Recessional Hymn

*A Mighty Fortress Is Our God*

(ELW) No. 504

\*The Dismissal (*response*)**C: Thanks be to God.**

Postlude



## Open Now Thy Gates of Beauty



1 O - pen now thy gates of beau - ty, Zi - on, let me en - ter there,  
 2 Gra - cious God, I come be - fore thee; come thou al - so un - to me;  
 3 Here thy praise is glad - ly chant - ed, here thy seed is du - ly sown;  
 4 Thou my faith in - crease and quick - en, let me keep thy gift di - vine;  
 5 Speak, O God, and I will hear thee, let thy will be done in - deed;



where my soul in joy - ful du - ty waits for God who an - swers prayer.  
 where we find thee and a - dore thee, there a heav'n on earth must be.  
 let my soul, where it is plant - ed, bring forth pre - cious sheaves a - lone,  
 how - so - e'er temp - ta - tions thick - en, may thy word still o'er me shine  
 may I un - dis - turbed draw near thee while thou dost thy peo - ple feed.



Oh, how bless - ed is this place, filled with so - lace, light, and grace!  
 To my heart, oh, en - ter thou, let it be thy tem - ple now!  
 so that all I hear may be fruit - ful un - to life in me.  
 as my guid - ing star through life, as my com - fort in all strife.  
 Here of life the foun - tain flows; here is balm for all our woes.



## Joyful, Joyful We Adore Thee



1 Joy - ful, joy - ful we a - dore thee, God of glo - ry, Lord of love!  
 2 All thy works with joy sur - round thee, earth and heav'n re - flect thy rays,  
 3 Thou art giv - ing and for - giv - ing, ev - er bless - ing, ev - er blest,



Hearts un - fold like flow'rs be - fore thee, prais - ing thee, their sun a - bove.  
 stars and an - gels sing a - round thee, cen - ter of un - bro - ken praise.  
 well - spring of the joy of liv - ing, o - cean - depth of hap - py rest!



Melt the clouds of sin and sad - ness, drive the gloom of doubt a - way.  
 Field and for - est, vale and moun - tain, flow - ry mead - ow, flash - ing sea,  
 Thou our Fa - ther, Christ our broth - er, all who live in love are thine;



Giv - er of im - mor - tal glad - ness, fill us with the light of day.  
 chant - ing bird, and flow - ing foun - tain call us to re - joice in thee.  
 teach us how to love each oth - er, lift us to the joy di - vine!



*Refrain*

This is the feast of vic-to-ry for our God. Al-le - lu - ia,



al - le - lu - ia, al - le - lu - ia. 1 Wor - thy is Christ, the Lamb



who was slain, whose blood set us free to be peo - ple of God.

*Refrain*

This is the feast of vic-to-ry for our God. Al-le - lu - ia,



al - le - lu - ia, al - le - lu - ia. 2 Pow - er, rich - es, wis - dom, and



strength, and hon - or, bless - ing, and glo - ry are his.

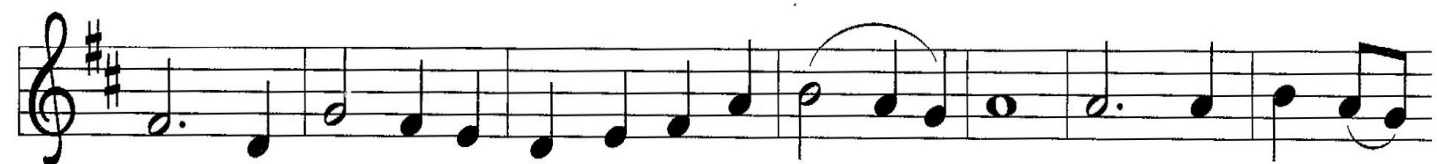
*Refrain*

This is the feast of vic-to-ry for our God. Al-le - lu - ia,



al - le - lu - ia, al - le - lu - ia. 3 Sing with all the peo - ple of

SBH 27



God, and join in the hymn of all cre - a - tion: Bless - ing, hon - or,

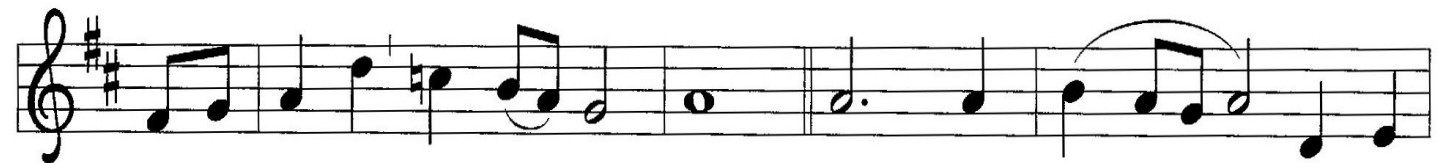


glo - ry, and might be to God and the Lamb for - ev - er. A - men.

*Refrain*



This is the feast of vic-to-ry for our God. Al-le - lu - ia,



al - le - lu - ia, al - le - lu - ia. 4 For the Lamb who was



slain has be - gun his reign. Al - le - lu - ia.

*Final refrain*



This is the feast of vic-to-ry for our God.



Al - le - lu - ia, al - le - lu - ia, al - le - lu - ia.

# Lord, Keep Us Steadfast in Your Word 517

1 Lord, keep us stead - fast in your word; curb those who  
 2 Lord Je - sus Christ, your pow'r make known, for you are  
 3 O Com - fort - er of price - less worth, send peace and

by de - ceit or sword would wrest the king - dom from your Son  
 Lord of lords a - lone; de - fend your ho - ly church, that we  
 u - ni - ty on earth; sup - port us in our fi - nal strife

and bring to naught all he has done.  
 may sing your praise e - ter - nal - ly.  
 and lead us out of death to life.